

Company: _____

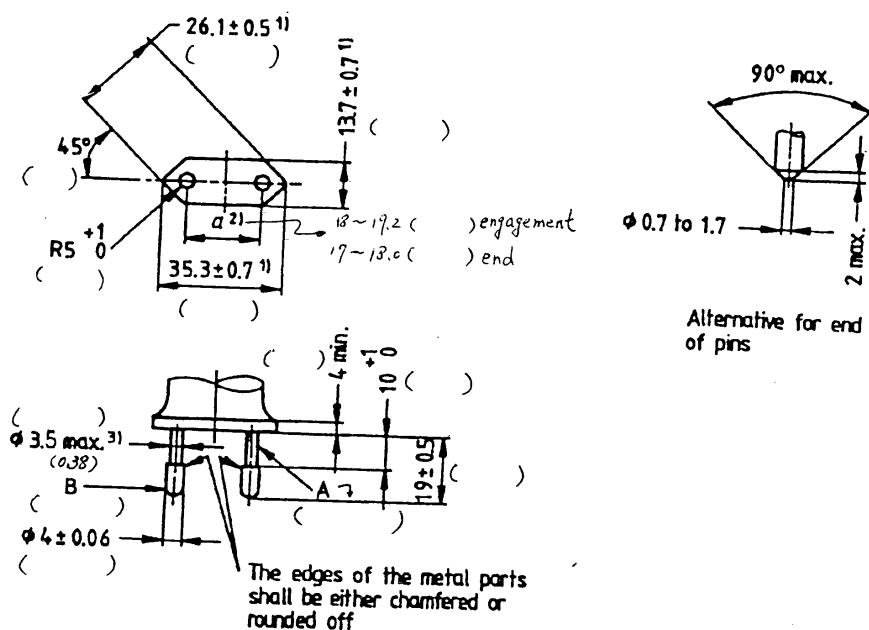
Model: _____

Report No: _____

Dimension Checking for 德国 Two-pole plug for class II appliances

EN50075 - Standard Sheet 1

IEC60083 - Standard C5



Dimensions in millimetres

A = insulating collar (Length of the pin ; insulating parts)
B = metal pin (Length of the metal parts)

1) These dimensions shall not be exceeded within a distance of 18 mm from the engagement face of the plug.

2) Dimension α is:

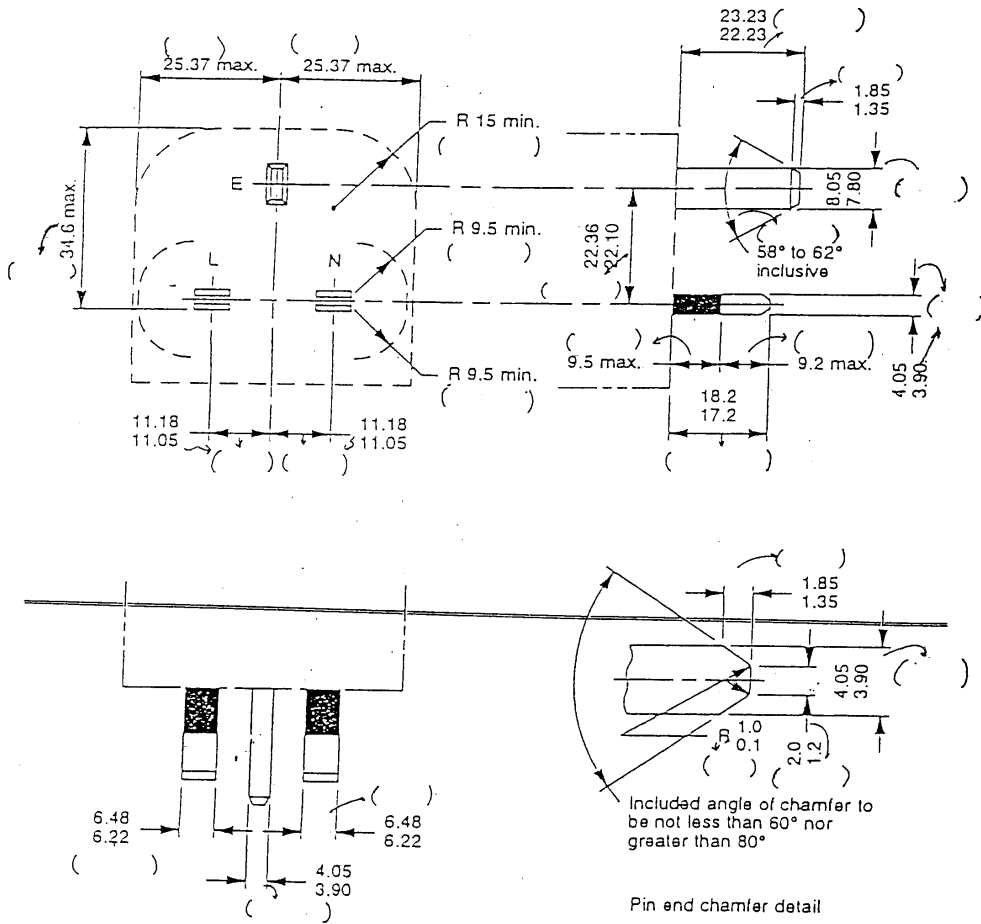
18 mm to 19.2 mm in the plane of the engagement face;
17 mm to 18 mm at the ends of the pins.

3) This dimension may be increased to 4 mm within a distance of 4 mm from the engagement face of the plug.

Pin ends shall be rounded, or conical as shown in detail sketch.

The sketches are not intended to govern design except as regards the dimensions shown.

UK Plug Dimensions Check Form (Figure 4 of BS 1363)



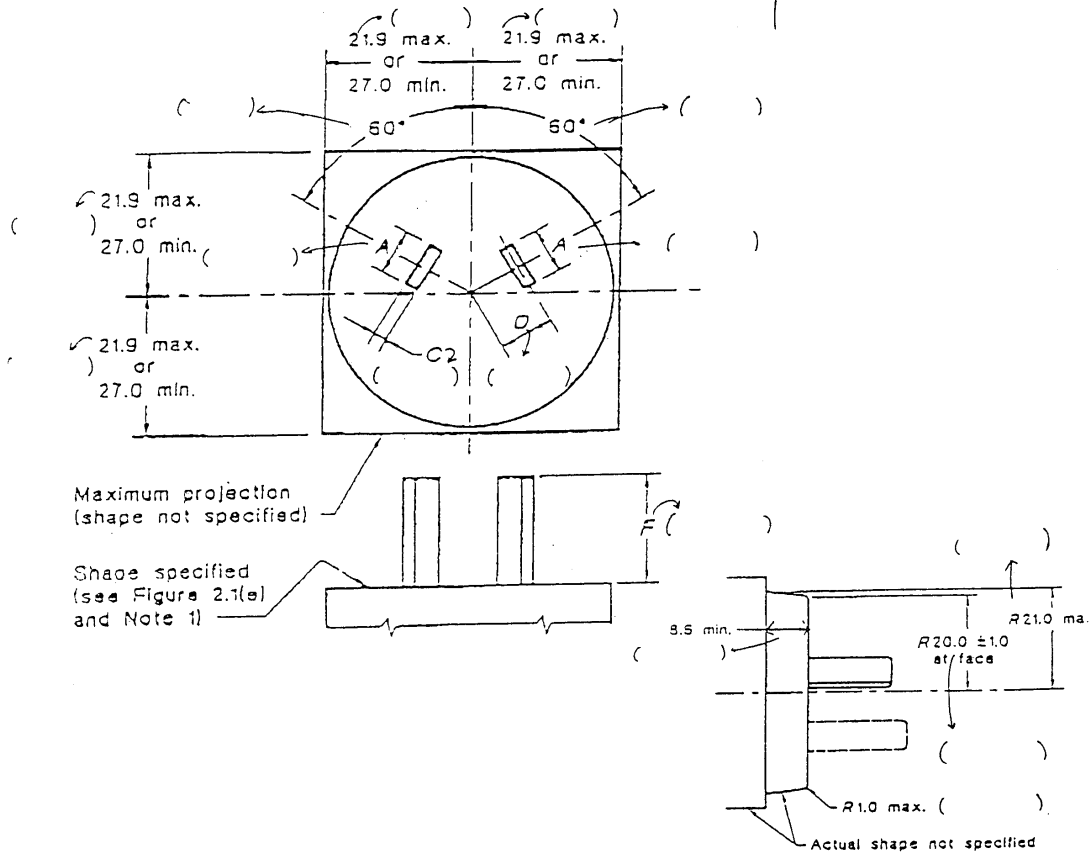
All dimensions are in millimetres.

Figure 4. Dimensions and disposition of pins (see clause 12)

Dimension Checking for Two-pin plugs (up to 10 A rating)

Figure 2.1 of AS/NZS 3112:1993

澳洲

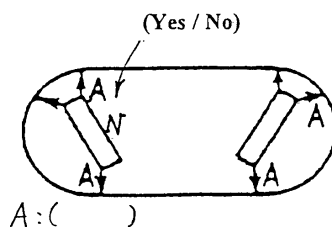


Symbol	Dimension (mm)	Tolerance (mm)
A	6.35	± 0.15
C	1.63	+ 0.15 - 0.05
D	7.92	No tolerance
F	17.06	± 0.4

IRAM 2063 Plug (Class II, two-pole) Checking Worksheet

Client: _____ Model: _____ Report No.: _____

There shall be a symbol "N" marked adjacently to the Neutral pin of the integral plug



A: 8mm (minimum) general discrepancy $\pm 0.1\text{mm}$ (unless otherwise specified)

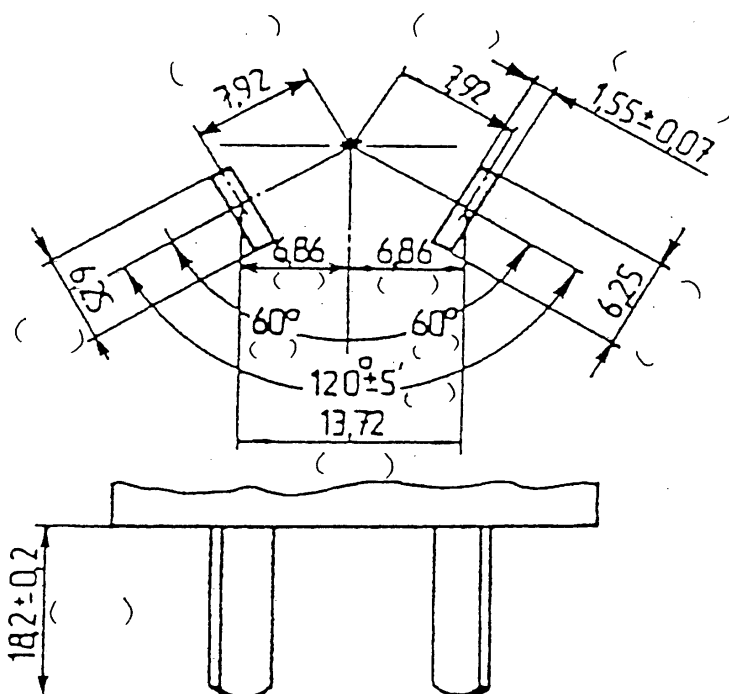


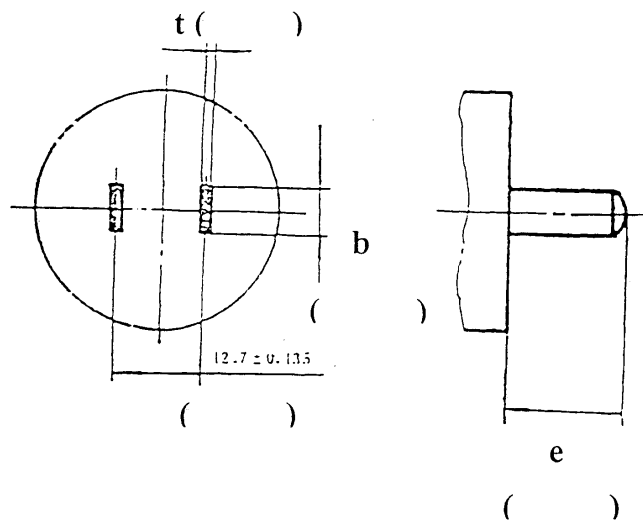
Figure 1

Company: _____ Model: _____ Report No.: _____

Dimension Checking for Two-pin plugs (6 A, 10 A rating)

Figure 1 of GB 1002-1996

中國大陸



Symbol	Dimension (mm)	Tolerance (mm)
t	1.5	+ 0 - 0.10
b	6.4	+ 0 - 0.22
e	16	± 0.35