

*Project topic :*

**SBI -GV ACP**

**LOGISTIC IMPROVEMENT**

# *Focusing area :*

**SBI-GV ACP SUPPLY AREA**

# *Goal :*

**UDIT LOGISTIC MANPOWER 15%**

# *Team Structure:*

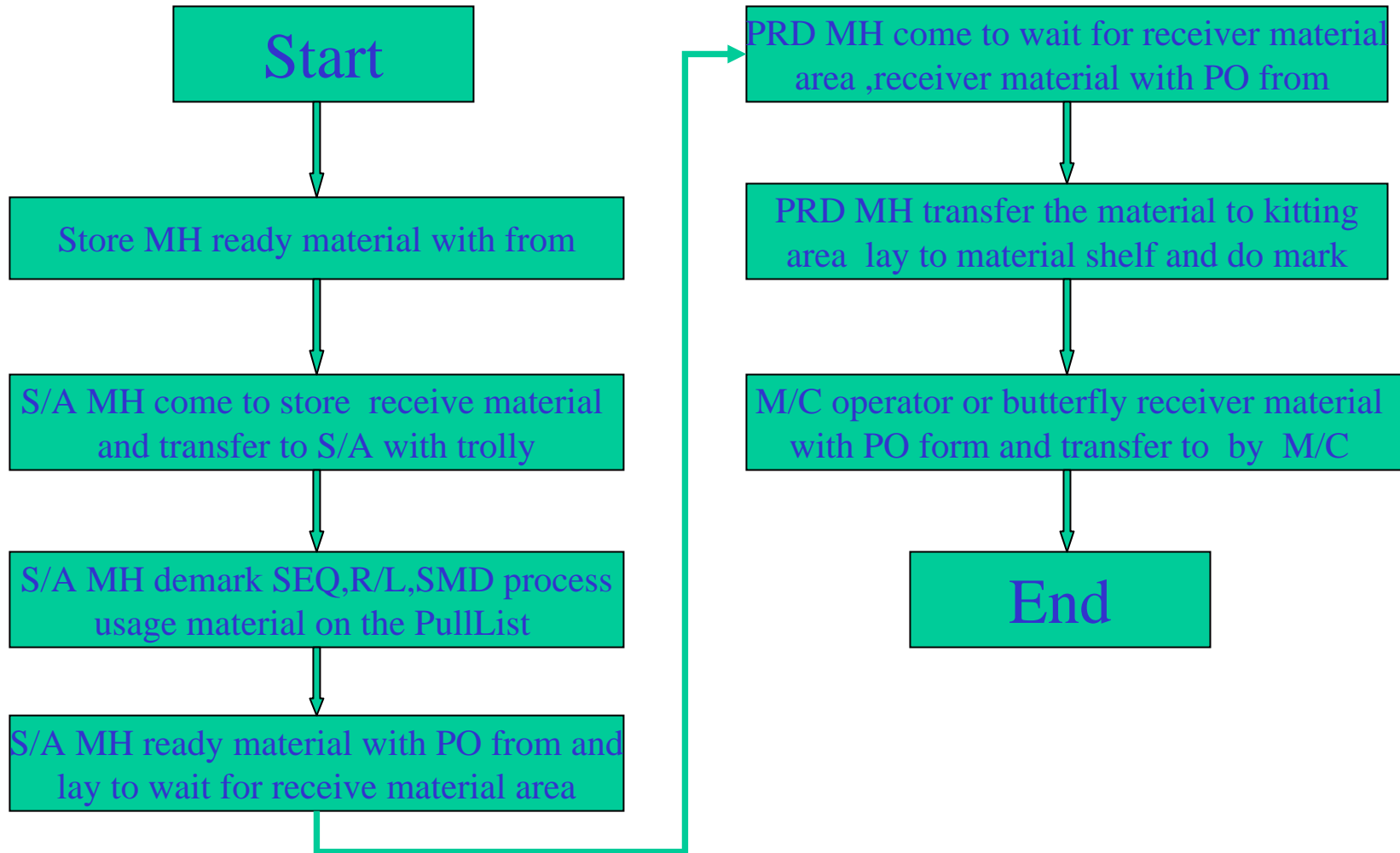
**Coach: Simon Li(ENG/IE)**

**Facilitator : Jane(ENG/IE)**

**Team leader : LouFuan(ENG/IE)**

**Team member :ChowYueQui,  
GeZiYong(PCMS-PRD)**

# Present material flow diagram



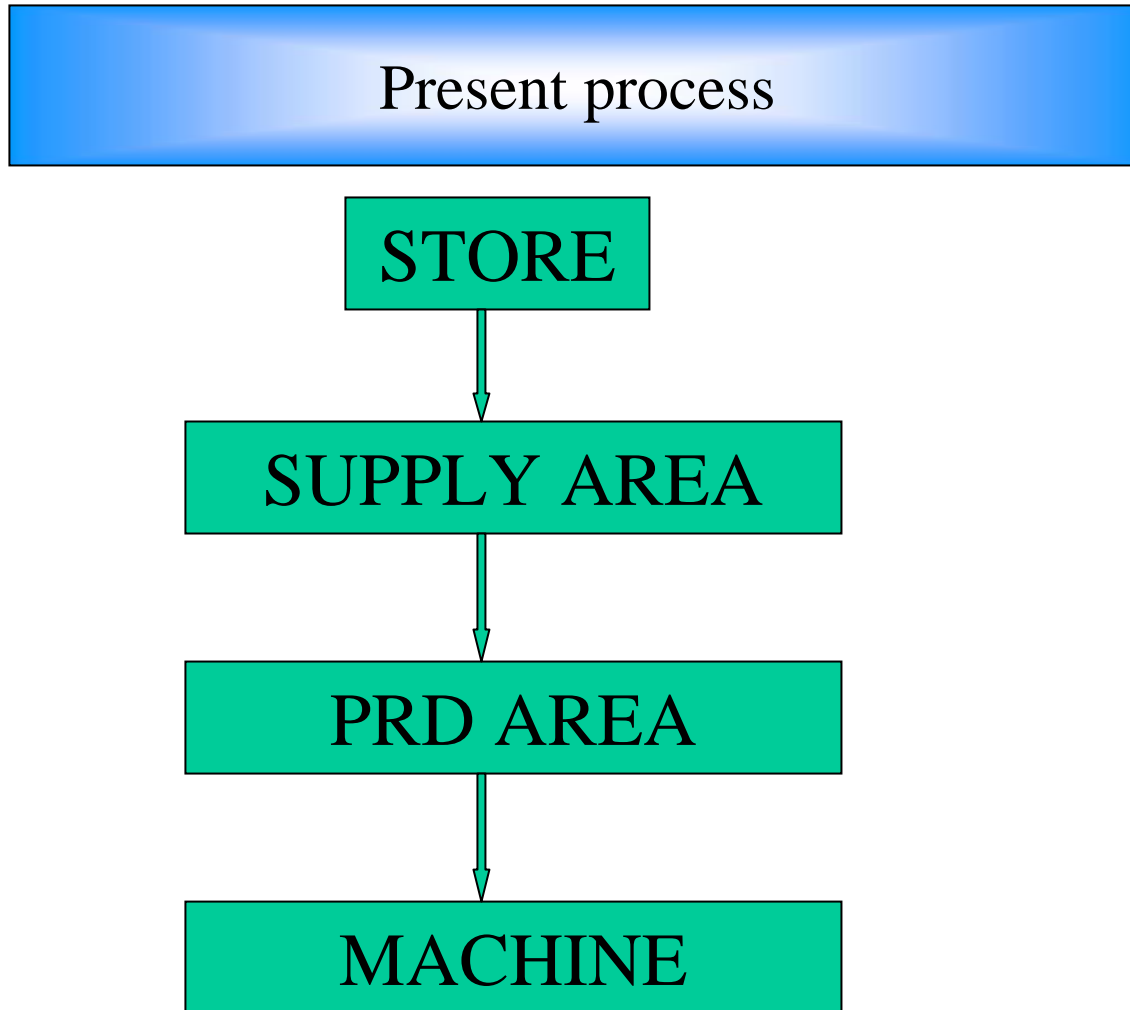
## Project schedule

1.Marriage Supply and PRD material team

2.Move Supply area

3.Change The material receive and release process

4.Change receive and release material mode



## Present manpower distribution

### B1 A

S/A MATERIAL TEAM

7

MATERIAL REWORK TEAM

2

PRD MATERIAL TEAM

6

PCBA STORE TEAM

4

### B1 B

S/A MATERIAL TEAM

7

MATERIAL REWORK TEAM

2

PRD MATERIAL TEAM

6

PCBA STORE TEAM

3

### D1 A

S/A MATERIAL TEAM

3

MATERIAL REWORK TEAM

1

PRD MATERIAL TEAM

2

### D1 B

S/A MATERIAL TEAM

3

MATERIAL REWORK TEAM

1

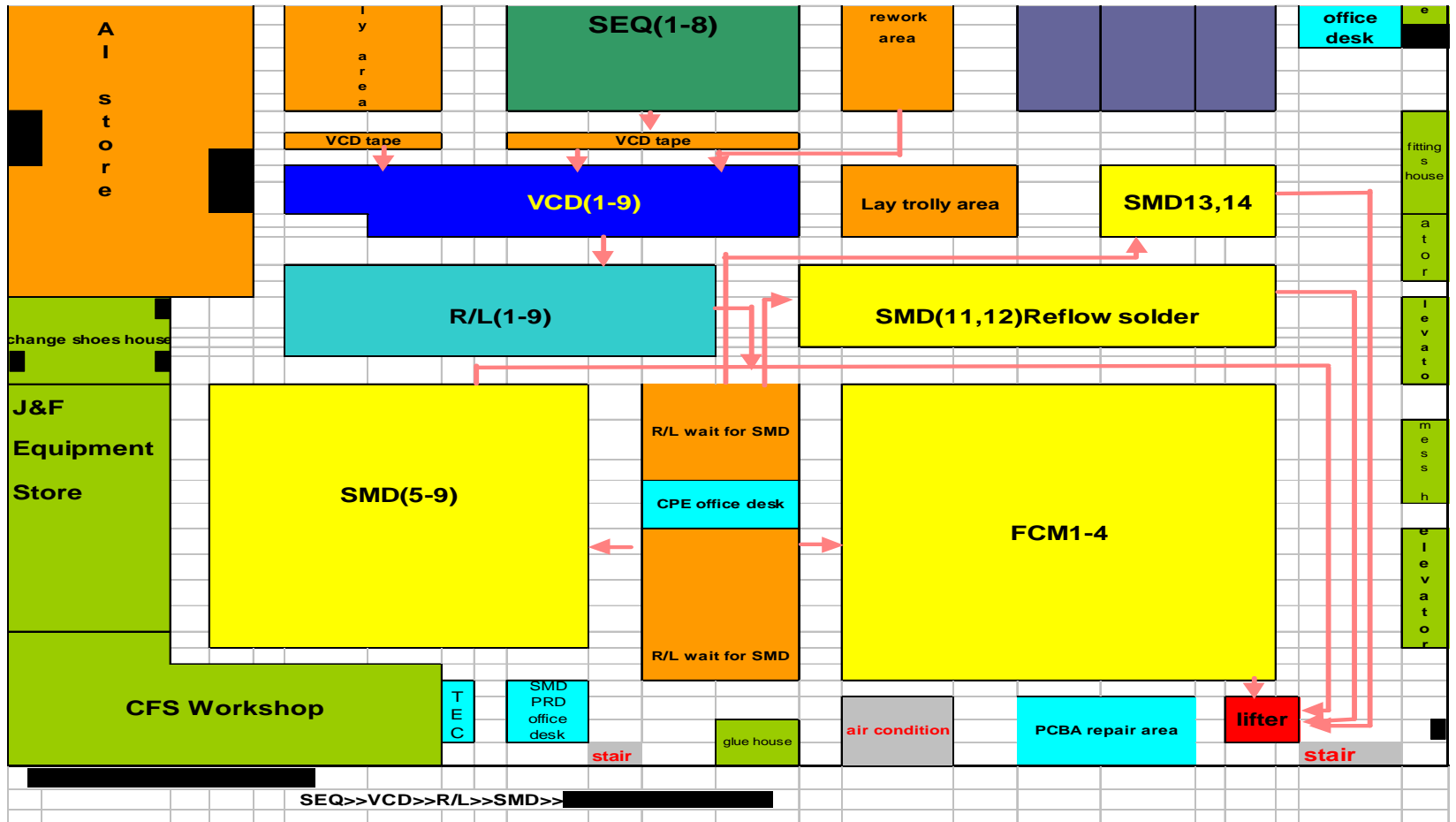
PRD MATERIAL TEAM

2

Total :49



# Present layout

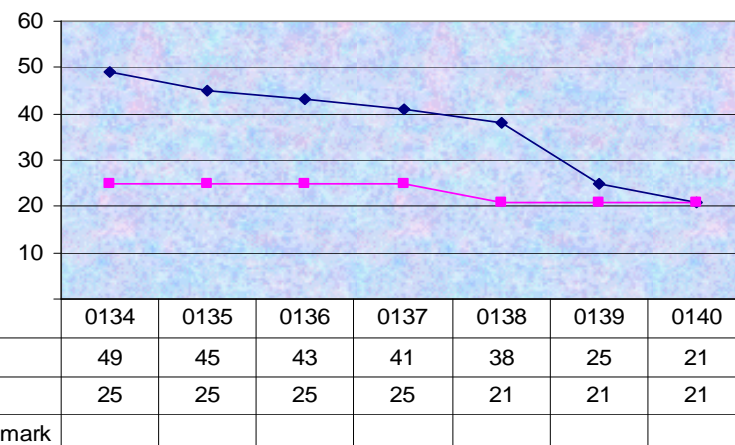


# Map & Measure

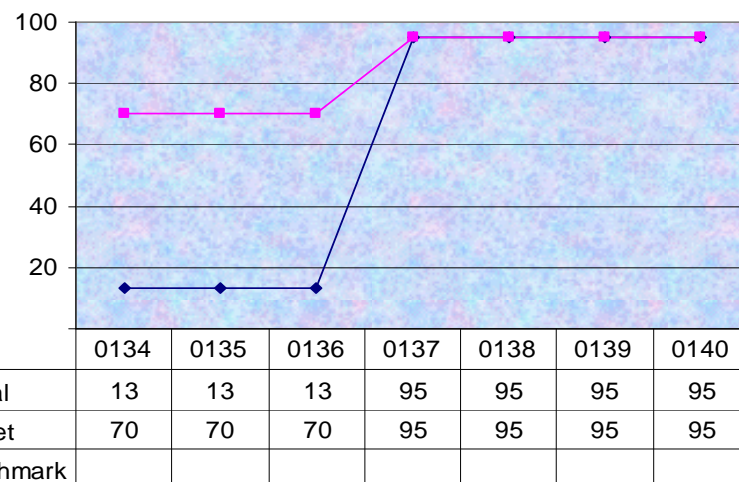
Project Name	Improvement SBI-GV supply area material flow	
Leader	LouFuan	
Email	GVIE PCBA/SZP/CE/PHILIPS@APAC	
Phone	755+7290256-3290	
Project Start Date	34 Week	
Last Update	40 Week	
Week #	6 Weeks	

<b>Description</b>		
1.Marriage Supply and PRD material team		
2.Move supply area		
3.Change the material receive and release process		
4.Change receive and release material mode		
<b>Metrics</b>		
Primary		Save manpower
Secondary		Save space
<b>Characterize Target</b>		
Save logistic manpower 15%		
<b>Characterize Benchmark</b>		
<b>Projected Financial Impact</b>		
<b>Process mapping</b>		
File Name		

## Primary Metric



## Secondary Metric



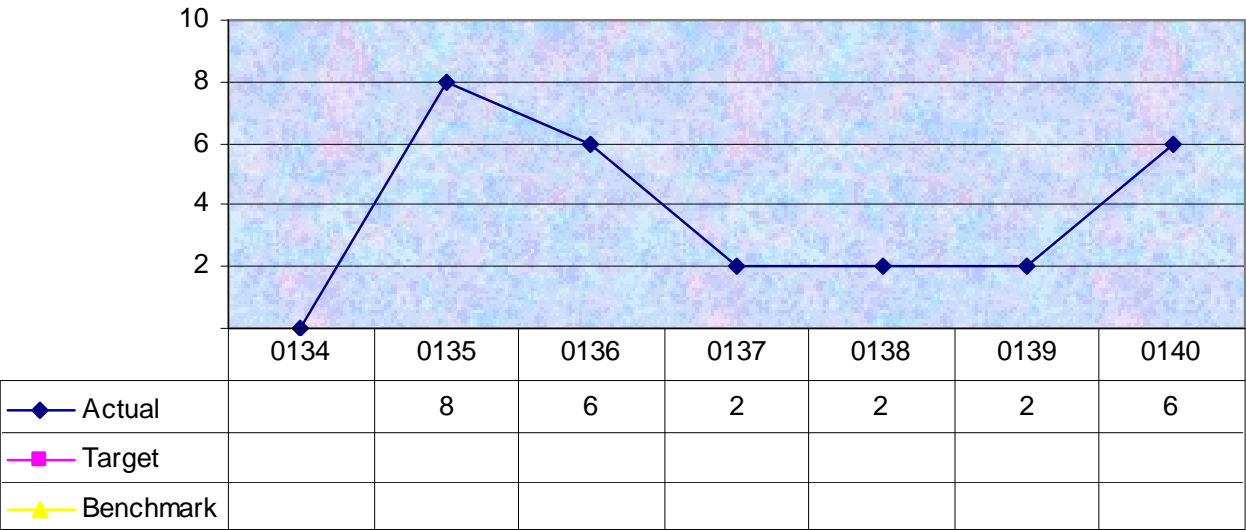
# Control & Conform

Control Actions Table

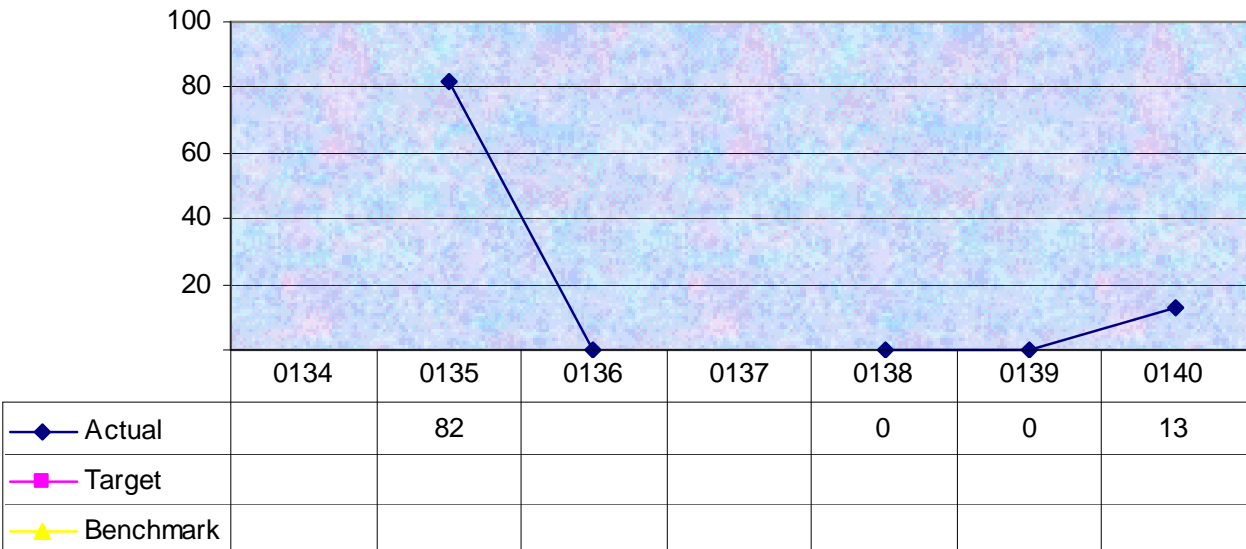
Who	What	When
LouFuan	Workload analysis	34,35week
LouFuan /GoZhiyong	Relayout	36Week
LouFuan	Material process analysis	37 Week
ChowYue eQiu	Change the material process	38,39Week
LouFuan /ChowYue eQiu	Material process	40 week
LouFuan /chowYue eQiu/Go	Review material manpower and material process	42,43 Week
All member	Project finish	43 Week
Financial Cost:0		

Financial Impact:

Primary Metric



Secondary Metric



## Explore & Evaluate

### Contribution to the Gap

## Phase E - Tools Used and Assoc

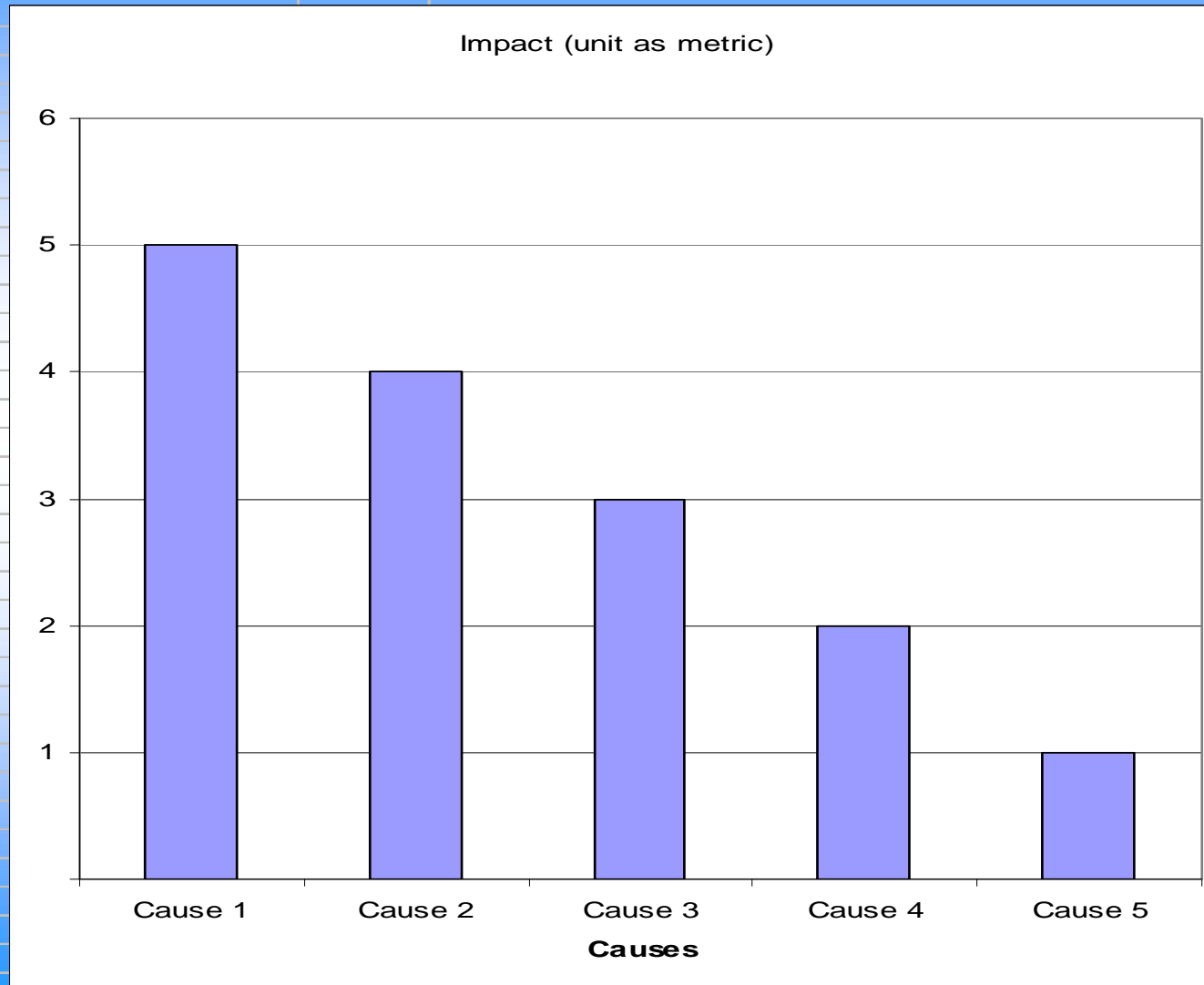
## Tools Used

## Non-Value added analysis

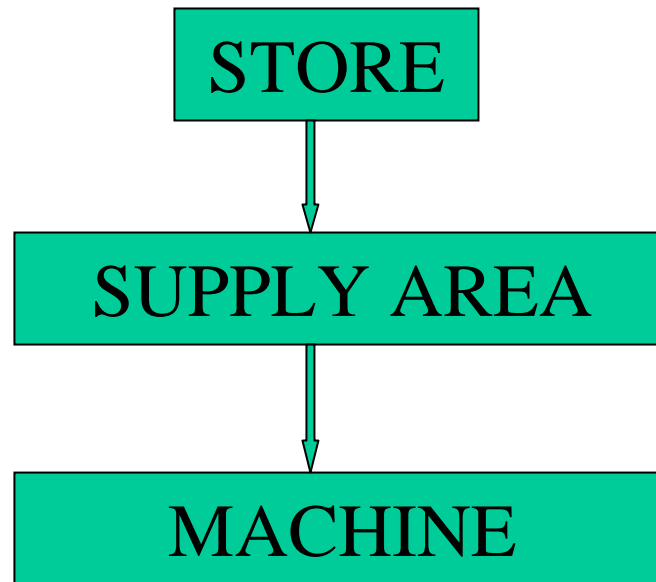
## Cause & Effect

## Comparison

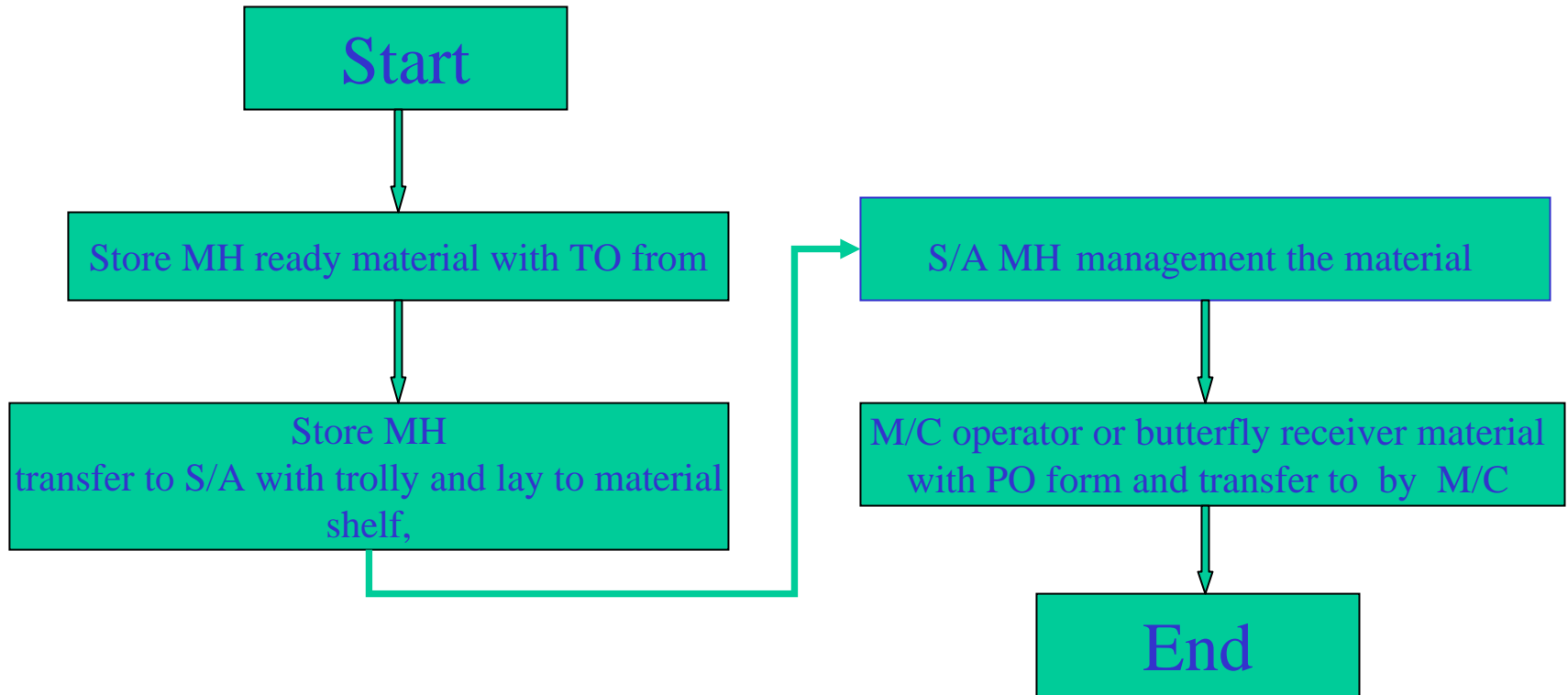
## FMEA



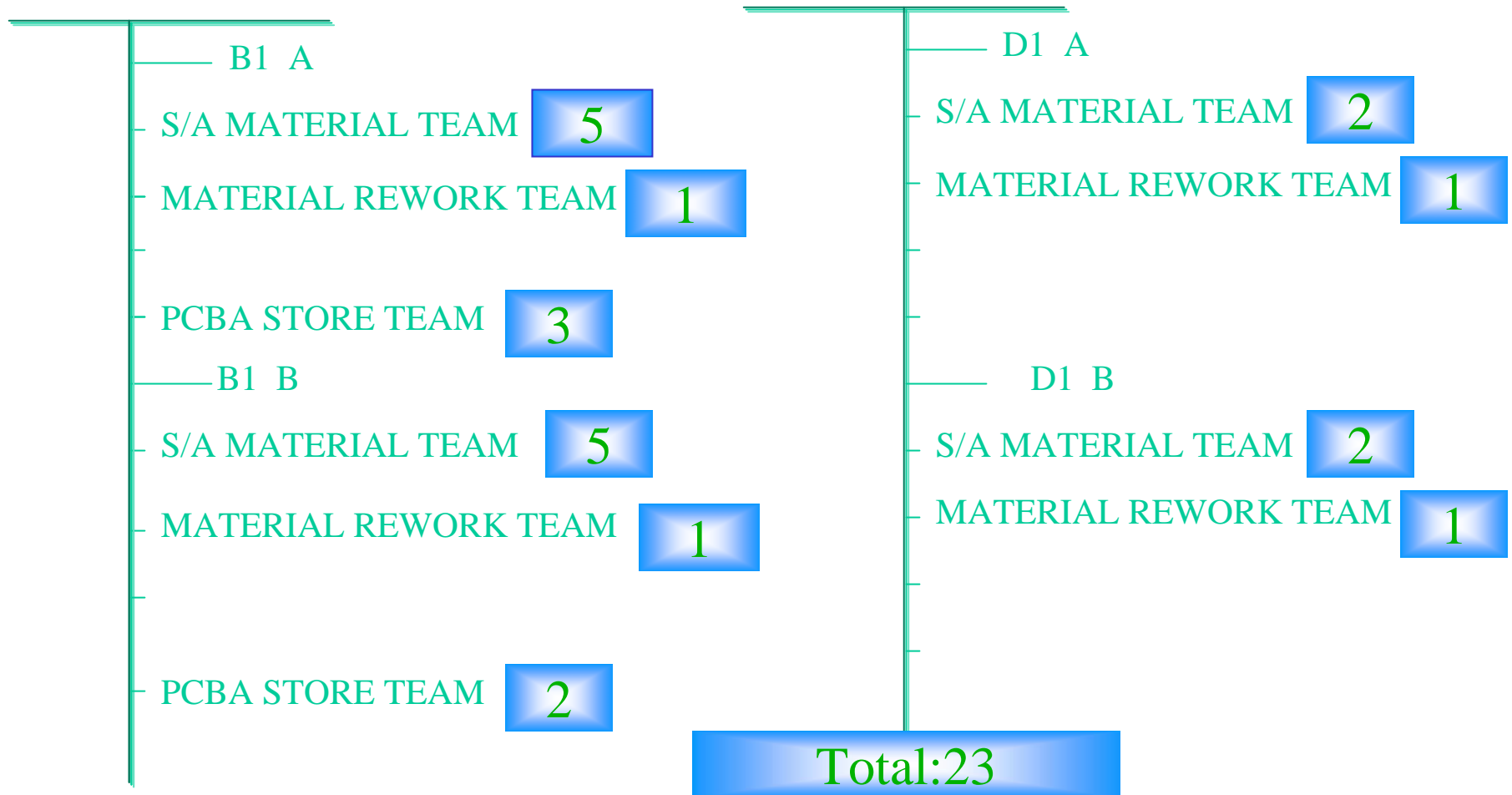
After improvement --- process



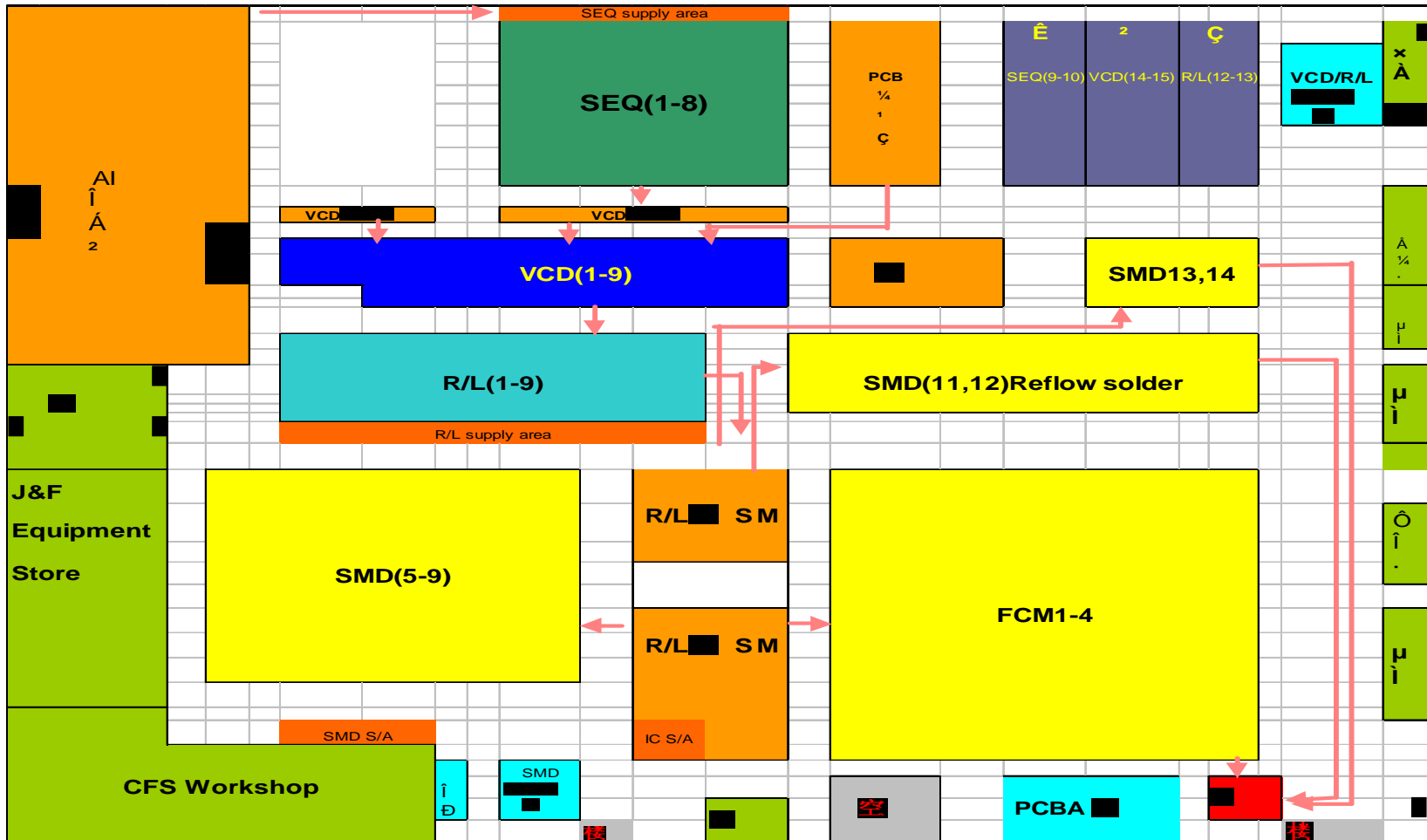
## After improvement --- material flow diagram



## After improvement --- manpower distribution



# After improvement --- layout





# Comparison

B1 A

S/A MATERIAL TEAM	7	5
MATERIAL REWORK TEAM	2	1
PRD MATERIAL TEAM	6	0
PCBA STORE TEAM	4	3

B1 B

S/A MATERIAL TEAM	7	5
MATERIAL REWORK TEAM	2	1
PRD MATERIAL TEAM	6	0
PCBA STORE TEAM	3	3

Total :49

D1 A

S/A MATERIAL TEAM	3	2
MATERIAL REWORK TEAM	1	1
PRD MATERIAL TEAM	2	0

D1 B

S/A MATERIAL TEAM	3	2
MATERIAL REWORK TEAM	1	1
PRD MATERIAL TEAM	2	0

Total: 23

## Future improvement opportunities

**Production plan to machine, the  
Material from store to machine  
And cancel the material supply  
area .**